

Lidder

DRY BEAN AND PULSES HARVESTER MACHINE



LIDDER IS THE  BRAND

DRY BEAN - LEGUME DIGGER / REMOVER MACHINA



IMPORTANT POINTS TO BE CONSIDERED DURING SOWING:

Sowing should be done by grain drill with 45 cm spacing

It is recommended to sow directly since the crop will be smushed by tractor and there will be some picking works.

(It won't hinder machine's running)

The field should be well prepared and frequency of the lines should be proper.

IMPORTANT POINTS TO BE CONSIDERED DURING HARVESTING:

Harvesting time is a critical factor. If harvesting starts late, crop may dry and it causes more loss.

After 2 years of research we have determined that harvesting in the night time would be more efficient because of high humidity rate.

In the morning times or in midday the crop is more dry because of the hot weather and it might slow down machine's performance.

In this case harvesting capacity would be reduced.

Early morning or late afternoon are more appropriate times for harvesting.

In order to get the best result and for an easier job, it is recommended to harvest during night times.

Liddor
DRY BEAN AND PULSES HARVESTER MACHINE

LIDDER IS THE **HPLOMB** BRAND
EXPORT

WhatsApp: +90 553 439 89 69



Handle your legume and dry bean, pea crop gently with virtually no loss. The Parallel Lift Front Divider System will provide dependable smooth vine separation in the toughest conditions. One man, one tractor, one pass through the field...handling your bean and pea crop gently with virtually no loss. The picking fingers provide a smooth gentle flow of material to the windrow.

POWER: 80 HP (Dual Thrust)

CAPACITY: 5 Lines (45 cm sowing distance (spacing))

DAILY HARVESTING CAPACITY: 50-75 Decare

(depends on conditions such as season ,hardness of soil, crop frequency)

WEIGHT: 1.500 KG

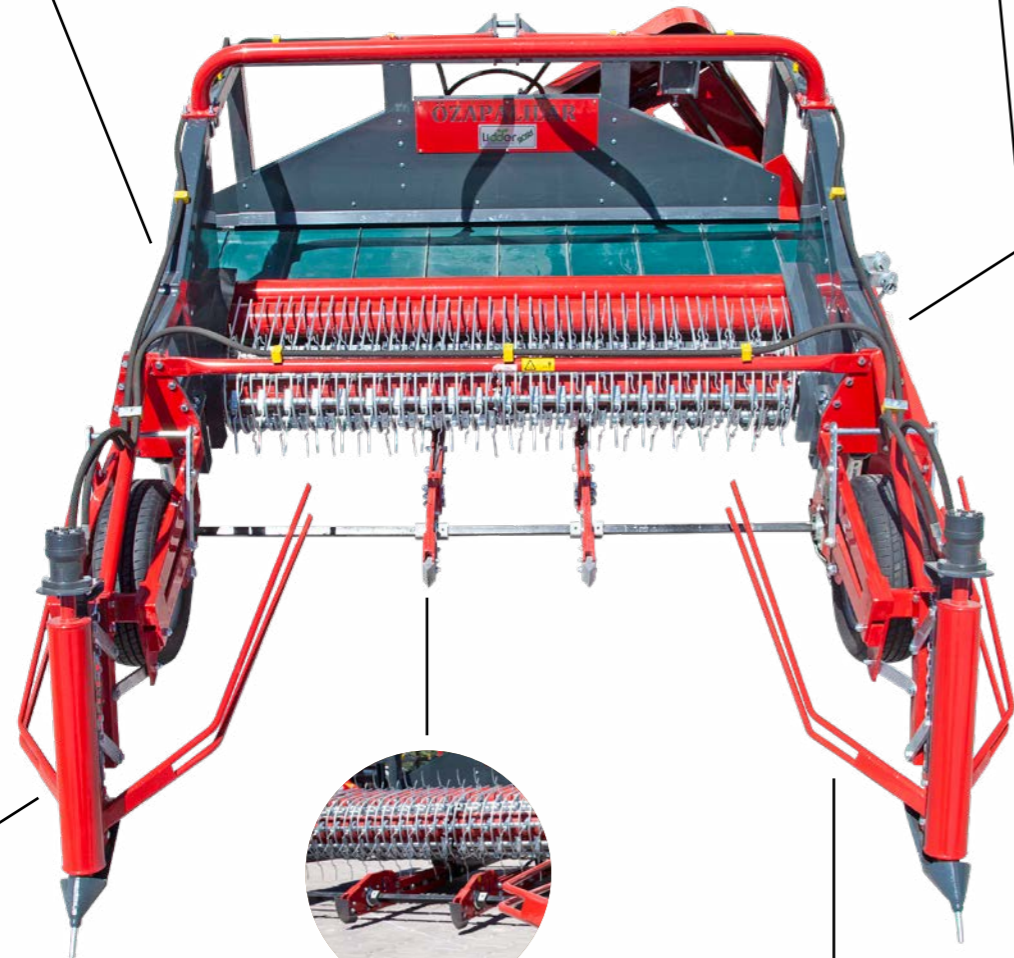
OPERATIONG CHARACTERISTIC : The tail moves through the connected mechanical and hydraulic system.

OPTIONAL EQUIPMENTS

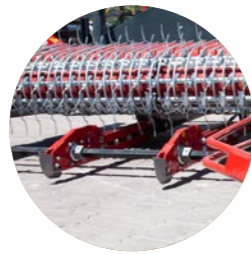
Reversible conveyor belt or central wind-rowing



Maximum collection with specially designed harrows



Its special alloy casting, it provides comfortable working underground.



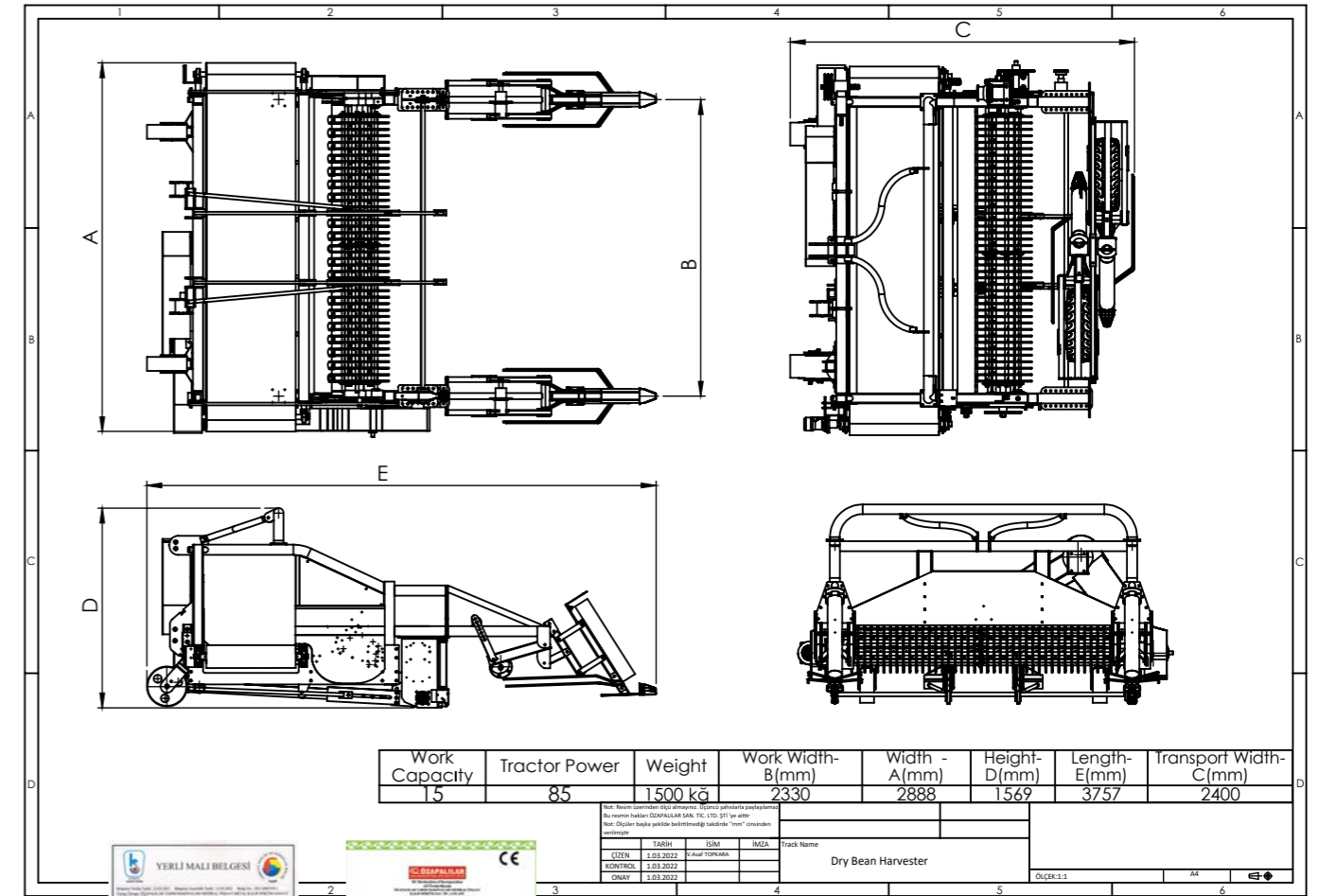
Lines between legumes separator bars for opening



Separated hydromotors more efficient mixed of fingers



TECHNICAL SPECIFICATIONS



Harvestable Legumes



Dry Beans



Cowpea



Pea



Chickpea



Kidney Beans



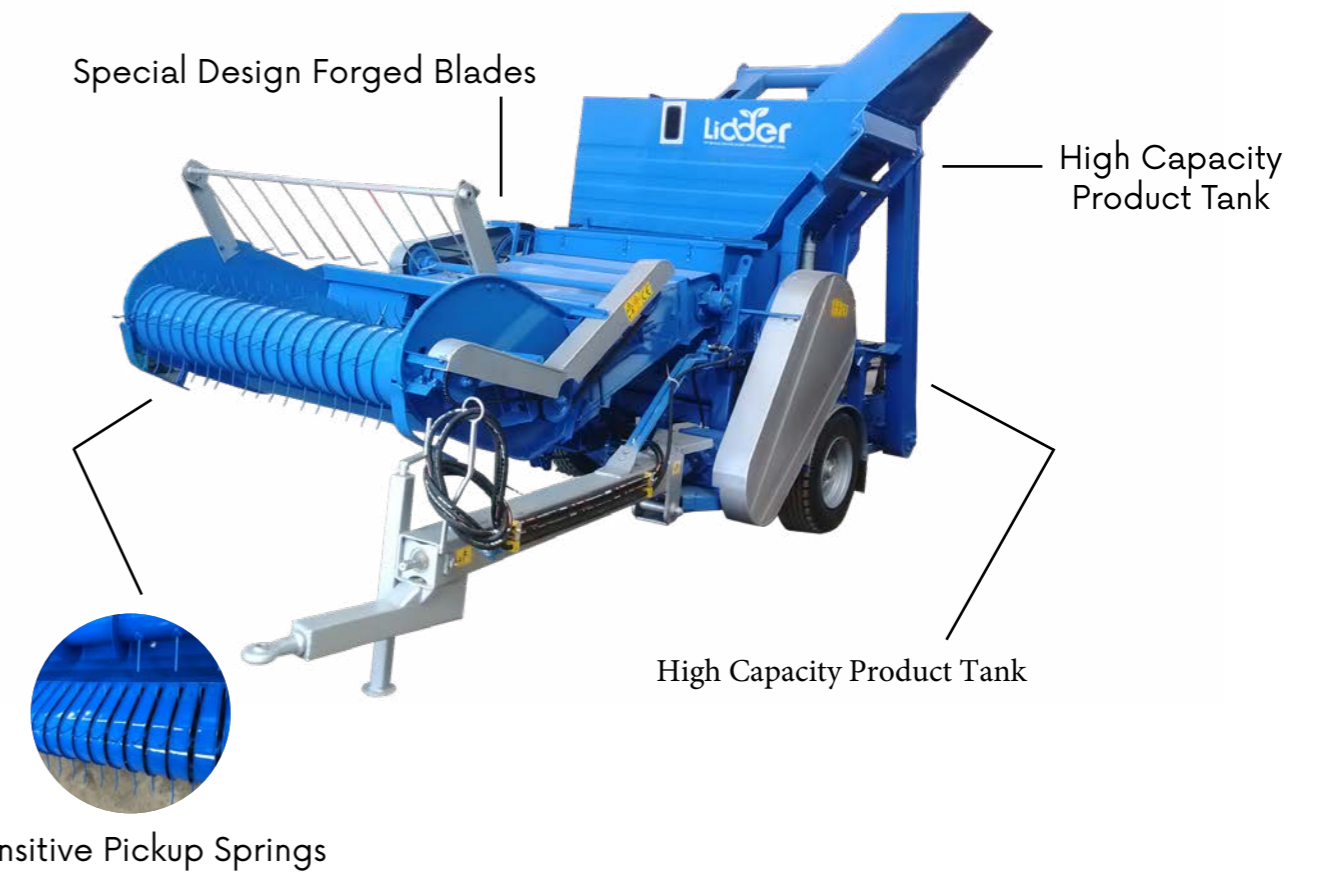
DRY BEAN & LEGUME HARVESTER MACHINE



Specially designed spring system takes the product from the ground without pouring. It makes harvesting undamaged with special blades.

Dry Bean & Legume Harvester Machine; picking and pounding the grains and pulses that have been cut or plucked from the ground and transporting the straw as a product to the pulses warehouse; It is a new generation threshing machine that automatically performs these operations in one go.

Harvester Machine Technical Specifications



Length- Width-Height: 5700 mm - 2600 mm - 3260 mm

Weight (Bean & Chickpea Harvester) : 2.800kg.

Weight (Lentil Harvester) : 3.100kg.

Forging Hopper Capacity : 1200 mm

Pickup With From The Ground : 1750 mm

Required Hydraulic Output : 4 Output (Opsiyonel/Optional)

Revolutions Per Minutes: 540 dv/dk

Product Tank Volume : 0,85 m³

Required Power : 60-80 Bg/HP

Tire Size : 11.5 / 80 - 15.3

Optional Hole Sizes For Different Crops



Harvestable Legumes



Dry Beans



Cowpea



Pea



Chickpea



Kidney Beans

Part Of Name	Sieve Dimension	red lentil	green lentil	Chickpea	White Bean	Red Mullet
sieve of batör	1180x1250	ø14 ø16	ø16 ø16	ø16 ø28	ø28 ø30	ø28 ø30
Product Sieve	370x1115	ø5	ø8	ø14	ø12	ø12
soil sieve	1255x800	2x20	2x20	4x20	3x20	4x20
casting sieve	1200x675	ø3	ø3	ø3	ø3	ø3
elevator bottom sieve	435x150	ø3	ø3	ø3	ø3	ø3

Given sieve sizes are factory settings. Based on the size of your crop you may choose sieves with bigger or smaller holes.

**TO ACHIEVE
THE FIRST ONES
NEED A LEADERSHIP**

**FARMER
FRIENDLY**

Lidder



Fevzi akmak Nb. Sıla St.
Elit Industry Area 46/A Karatay / KONYA / TURKEY

+90 533 283 75 91 - +90 506 996 82 79

www.ozapalilar.com info@ozapalilar.com